

FOR
LEASE

2082 EDISON AVENUE

SAN LEANDRO, CALIFORNIA

±4,000 SF
Warehouse /
Office Space

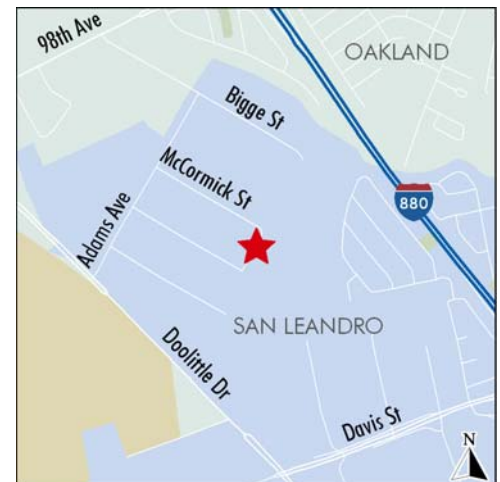
Available Now

New Sign on
Property



FEATURES:

- ±4,000 SF
- Office / conference room
- Restrooms
- Warehouse space
- New paint/carpet/lighting in the office area
- Two (2) roll up doors
- Parking on site
- Business park setting with deli on site open five days a week
- **\$0.55 PSF, I.G.**



CB Richard Ellis, Inc.
Broker Lic. 00409987

FOR MORE
INFORMATION
PLEASE
CONTACT

Michael Barry

Senior Vice President
Lic. 00950054
510.874.1926
michael.barry@cbre.com

Kenneth Morris

Vice President
Lic. 01312918
510.874.1983
ken.morris@cbre.com

Mike Conn

Associate
Lic. 01370833
510.874.1957
mike.conn@cbre.com

CBRE
CB RICHARD ELLIS

FOR
LEASE



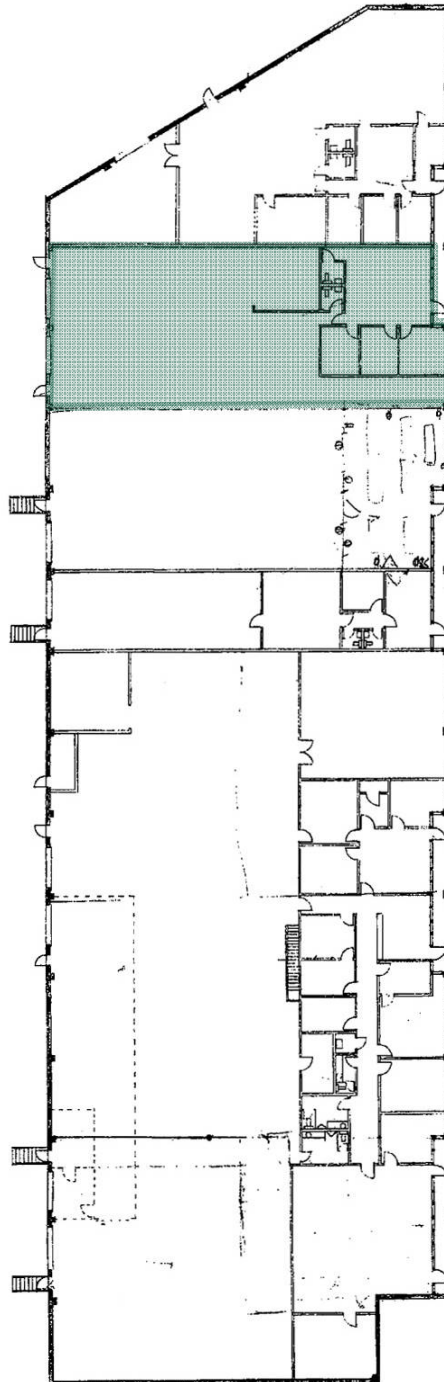
2082 EDISON AVENUE

SAN LEANDRO, CALIFORNIA

±4,000 SF
Warehouse /
Office Space

Available Now

BUILDING C



Plan not to scale

CB Richard Ellis, Inc.
Broker Lic. 00409987

FOR MORE
INFORMATION
PLEASE
CONTACT

Michael Barry

Senior Vice President
Lic. 00950054
510.874.1926
michael.barry@cbre.com

Kenneth Morris

Vice President
Lic. 01312918
510.874.1983
ken.morris@cbre.com

Mike Conn

Associate
Lic. 01370833
510.874.1957
mike.conn@cbre.com

CB Richard Ellis | 555 12th Street | Suite 900 | Oakland, CA 94607

©2009 CB Richard Ellis, Inc. This information has been obtained from sources believed reliable. We have not verified it and make no guarantee, warranty or representation about it. Any projections, opinions, assumptions or estimates used are for example only and do not represent the current or future performance of the property. You and your advisors should conduct a careful, independent investigation of the property to determine to your satisfaction the suitability of the property for your needs.

