

FOR
LEASE

2052 EDISON AVENUE

SAN LEANDRO, CALIFORNIA

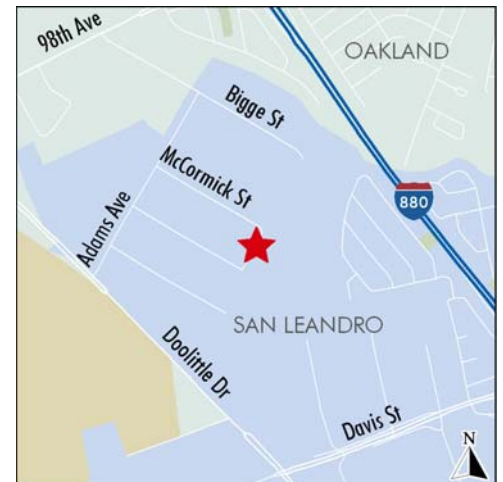
±17,440 SF
Warehouse /
Office Space

Available Now



FEATURES:

- ±17,440 SF
- Private offices
- Kitchenette in the space
- Restrooms
- Warehouse space
- New paint/carpet/lighting in the office area
- New paint/lights in the warehouse
- Two (2) drive-in doors
- Two (2) dock high
- Parking on site
- Business park setting with deli on site open five days a week
- Owner will consider some removal of office space
- **\$0.44 PSF, I.G.**
- Yard available



CB Richard Ellis, Inc.
Broker Lic. 00409987

FOR MORE
INFORMATION
PLEASE
CONTACT

Michael Barry

Senior Vice President
Lic. 00950054
510.874.1926
michael.barry@cbre.com

Kenneth Morris

Vice President
Lic. 01312918
510.874.1983
ken.morris@cbre.com

Mike Conn

Associate
Lic. 01370833
510.874.1957
mike.conn@cbre.com

CBRE
CB RICHARD ELLIS

FOR
LEASE

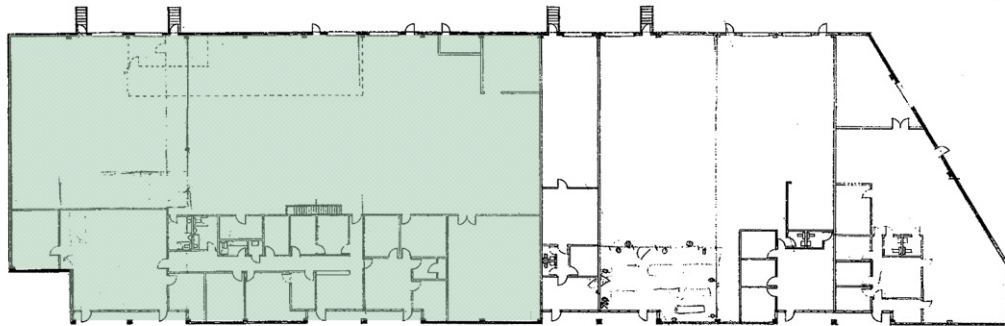


2052 EDISON AVENUE

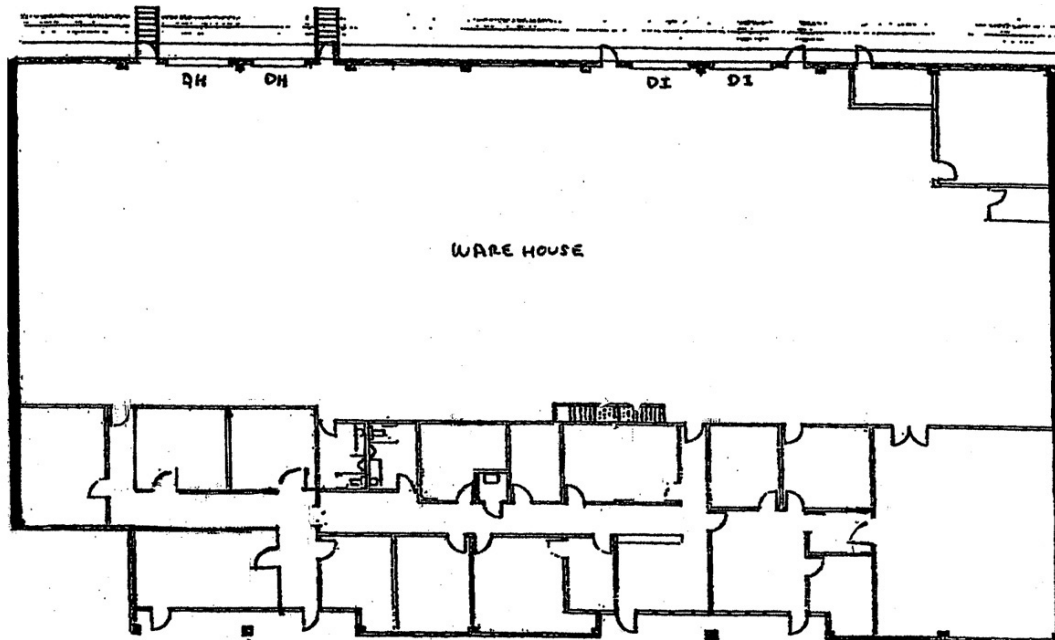
SAN LEANDRO, CALIFORNIA

±17,440 SF
Warehouse /
Office Space

Available Now



BUILDING C



CB Richard Ellis, Inc.
Broker Lic. 00409987

**FOR MORE
INFORMATION
PLEASE
CONTACT**

Michael Barry

Senior Vice President
Lic. 00950054
510.874.1926
michael.barry@cbre.com

Kenneth Morris

Vice President
Lic. 01312918
510.874.1983
ken.morris@cbre.com

Mike Conn

Associate
Lic. 01370833
510.874.1957
mike.conn@cbre.com

Plans not to scale



CB Richard Ellis | 555 12th Street | Suite 900 | Oakland, CA 94607

©2009 CB Richard Ellis, Inc. This information has been obtained from sources believed reliable. We have not verified it and make no guarantee, warranty or representation about it. Any projections, opinions, assumptions or estimates used are for example only and do not represent the current or future performance of the property. You and your advisors should conduct a careful, independent investigation of the property to determine to your satisfaction the suitability of the property for your needs.